

NASA Goddard Space Flight Center/ Wallops Flight Facility: Unmanned Aircraft Systems



UAS Size Category:

Category	I	II	III
Weight (lbs.)	<55	55 to 330	>300
Airspeed (kts)	<70	<200	>200
Type	Model or Small UAS	Small UAS	UAS

UAS Vehicles Previously supported by Wallops:

UAS	Max Speed (mph)	Payload Weight (lbs)	Flight time (hr)
Sky Raider	31	7.7	0.66
Stalker	58	5.5	8
TigerShark	70	95	9
Global Hawk	391	3,000	34
Overall Range:	31-391	7.7-3,000	0.66-34



Wallops UAS runway located on Wallops Island:
1,500 feet long and 50-feet wide.

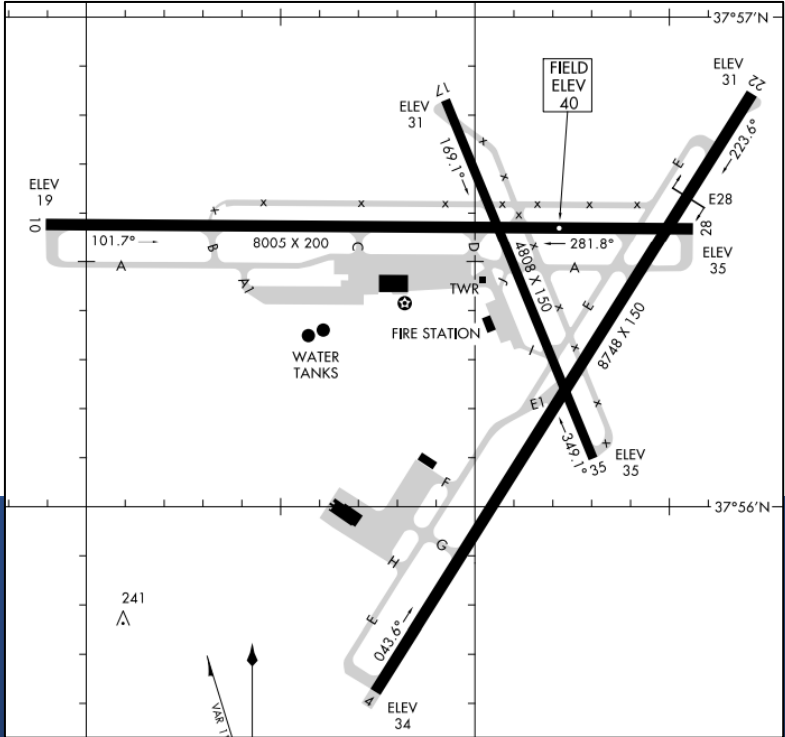
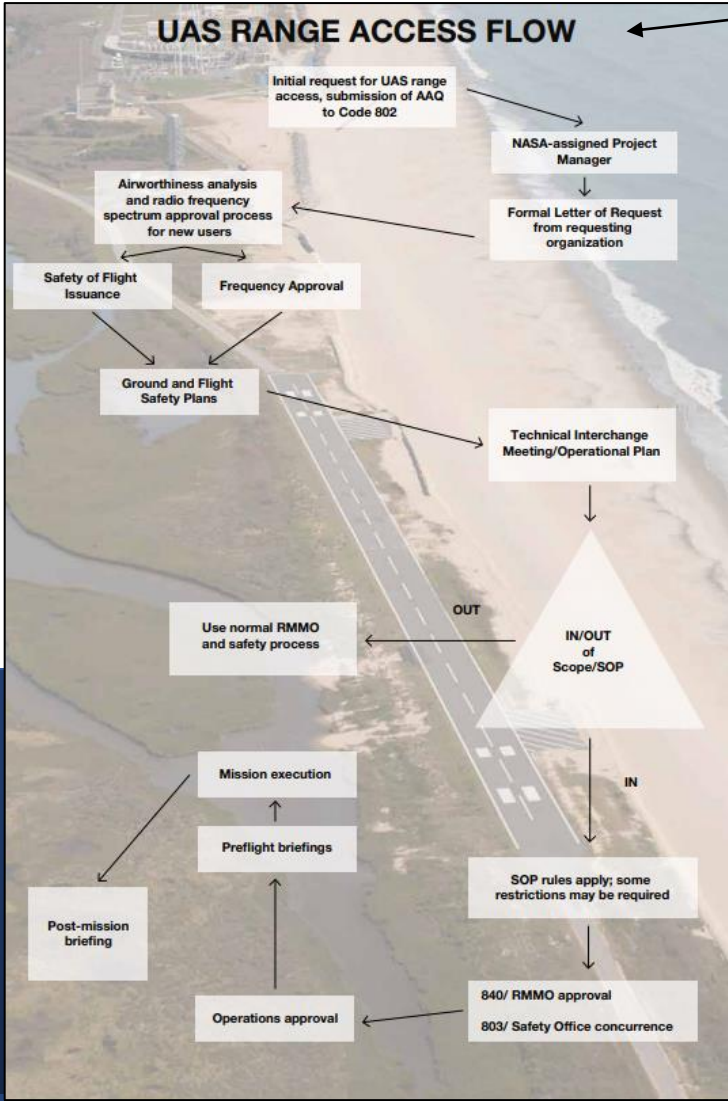
The UAS and Aircraft Integration and Test Facility
is located in hangar N-159.

Interested in flying a UAS mission?
Contact Victor Mask for dedicated and piggyback opportunities:
victor.mask@nasa.gov



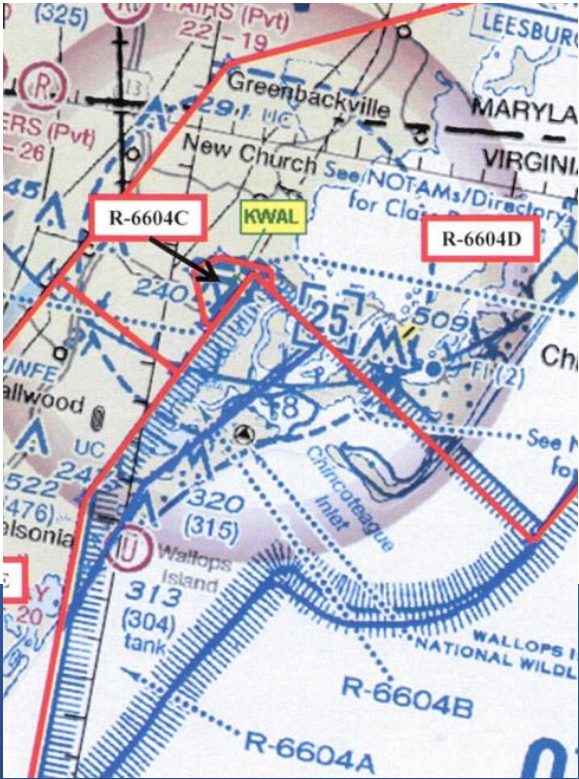
UAS Airworthiness:

Prior to approval to conduct range operations, the range requestor/user must first submit UAS data for analysis and be granted a statement of airworthiness for flight by NASA.



Wallops Main Base Runways:

- 10-28 – 8,005 feet by 200 feet
- 04-22 – 8,750 feet by 150 feet
- 17-35 – 4,810 feet by 150 feet



Wallops currently manages an area of restricted airspace (R-6604 A and B) that encompasses the launch facilities on Wallops Island from the surface to unlimited.